



MORGAN ASSOCIATES

ESTATE & LETTINGS AGENCY



100, Bath Road,  
Gloucestershire GL53 7JX  
£995 PCM



1



1



1



E

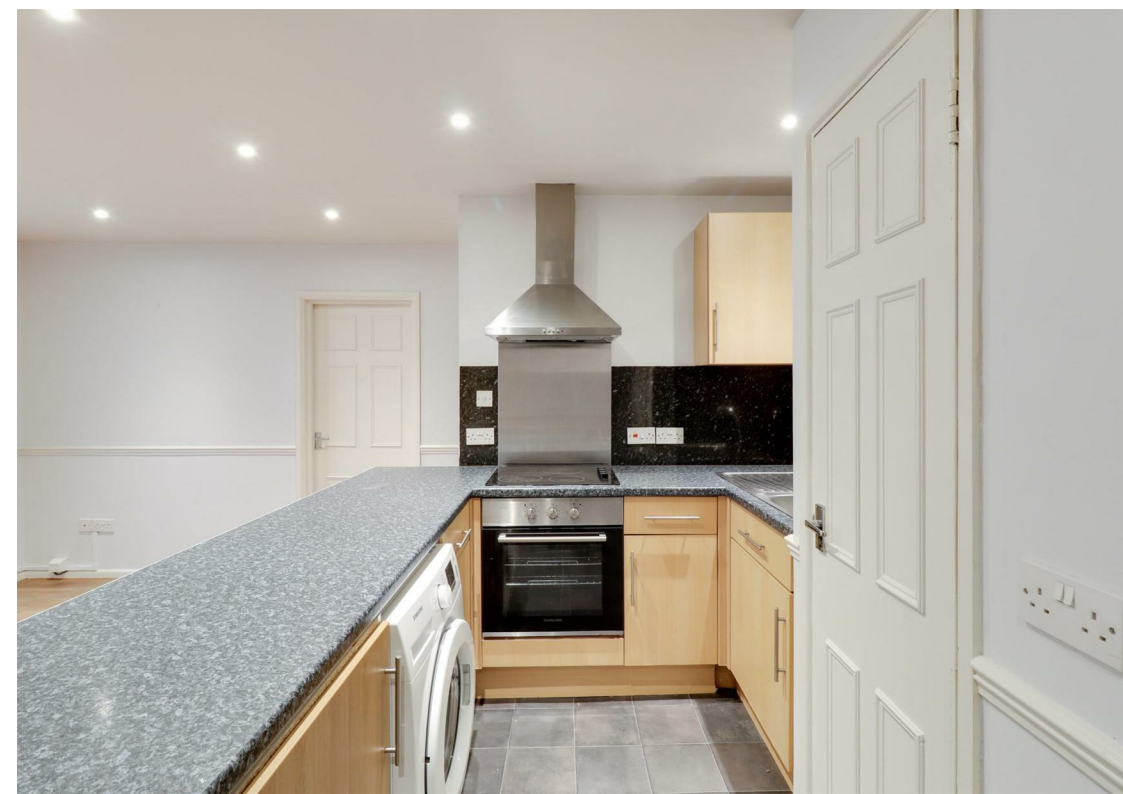
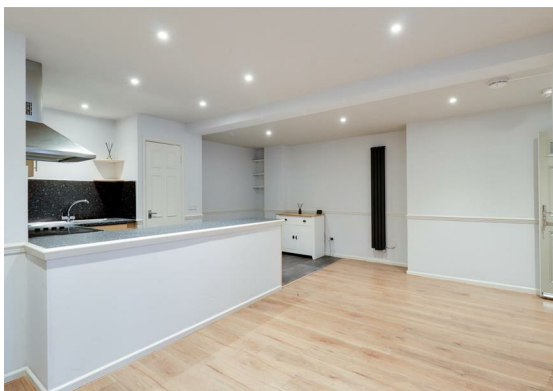
100, Bath Road,

Gloucestershire GL53 7JX

Perfectly positioned on the ever-popular Bath Road in Cheltenham, this lower ground floor, one-bedroom property enjoys an exceptional setting just a stone's throw of Cheltenham Town Centre and an excellent array of local amenities.

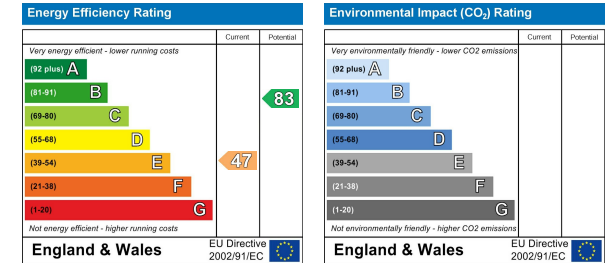
The property comprises of a bright and spacious open-plan reception, dining and kitchen area, creating an elegant and sociable living space. A double bedroom and a bathroom complete the internal accommodation.

Occupying a handsome period building, the property combines character and convenience, further benefitting from off-road parking and a private courtyard for the use of the tenant. The property is warmed by electric heating.



## Floor Plan

## Energy Efficiency Graph



## Area Map



## Viewing

Please contact us on 01242 514 285 if you wish to arrange a viewing appointment for this property or require further information.

Rotunda Buildings Montpellier Exchange  
Cheltenham  
Gloucestershire  
GL50 1SJ

T. 01242 514 285

E. [info@morgan-associates.co.uk](mailto:info@morgan-associates.co.uk)

W. [www.morgan-associates.co.uk](http://www.morgan-associates.co.uk)

These particulars, whilst believed to be accurate are set out as a general outline only for guidance and do not constitute any part of an offer or contract. Intending purchasers should not rely on them as statements of representation of fact, but must satisfy themselves by inspection or otherwise as to their accuracy. No person in this firm's employment has the authority to make or give any representation or warranty in respect of the property.

